



FABRICATED
PLUMBING
PRODUCTS



BSEN 1329/BSEN 1401
BS 3505/BSEN 1452
BS 5255



FABRICATED PLUMBING PRODUCTS

GREASE TRAPS

Grease Trap Type A



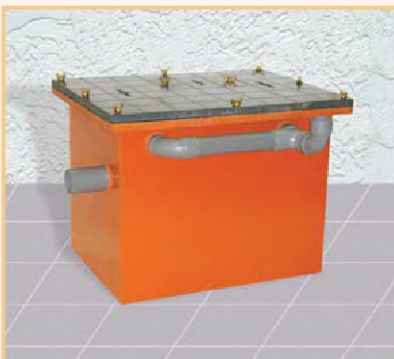
Grease Trap Type B



Grease Trap Type C



Grease Trap Type D



Cosmoplast Plumbing Products cover wide range of specialized applications, which require custom made items. With over 48 years of experience in serving the plumbing market in the Middle East, Cosmoplast has become the market leader in the specialized fabrication works.

Cosmoplast fabricated products cover wide range of applications ranging from simple items to more complicated and precise items. All products are generally fabricated from UPVC material, with other materials available upon request.

SAND TRAPS

Sand traps are utilized to separate sand and tiny rocks from the drainage lines and avoid reaching the main sewer lines. This is achieved through separation basket with tiny holes which allows easy cleaning and replacement.



CATCH BASINS



CUSTOM P-TRAPS



DRY MANHOLES



PUDDLE FLANGES



CUSTOM GULLY TRAPS



**FABRICATED
BIG SIZE TEES**



MITERED BENDS



INTERCEPTORS



**STREET LIGHTING
CONDUIT BENDS**



BELL MOUTH FLANGES



**FABRICATED DUCT
COUPLERS**



LONG RADIUS BENDS



**REPAIR COUPLERS
AND SOCKETS**



**FABRICATED REDUCER
Y-BRANCHES AND TEES**



**CUSTOM MADE
DRAINAGE FITTINGS**



**NON-STANDARD
ANGLE BENDS**

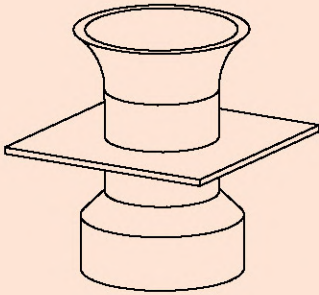


**FABRICATED END
CAPS AND PLUGS**



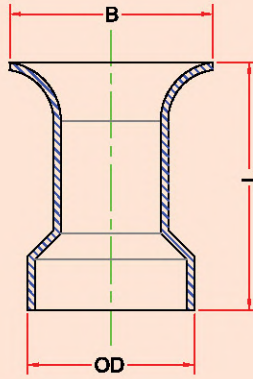
uPVC BELL MOUTH SOCKET

Bell mouth with puddle flange



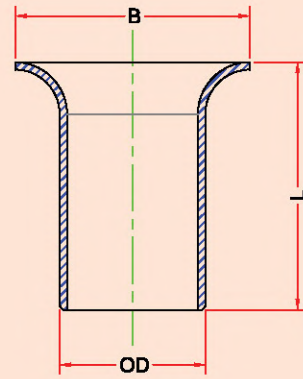
ISOMETRIC VIEW

Socket End Belt Dimension



SECTIONAL VIEW

Spigot End Belt Dimension

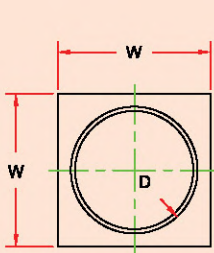


SECTIONAL VIEW

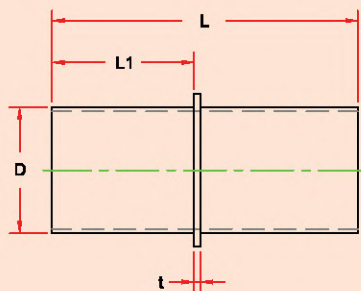
OD (Inch)	OD (mm)	LENGTH (L) (mm)	BELL END (B) (mm)
4	114.1	250	145
6	168.0	250	190
8	218.8	300	265
10	272.6	400	330

Note: The dimensions can be altered to suit specific requirements

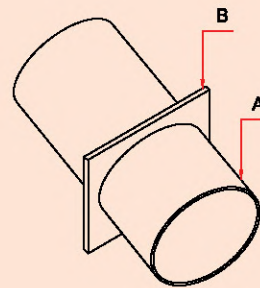
uPVC PUDDLE FLANGE



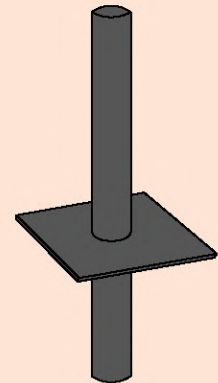
TOP VIEW



FRONT VIEW

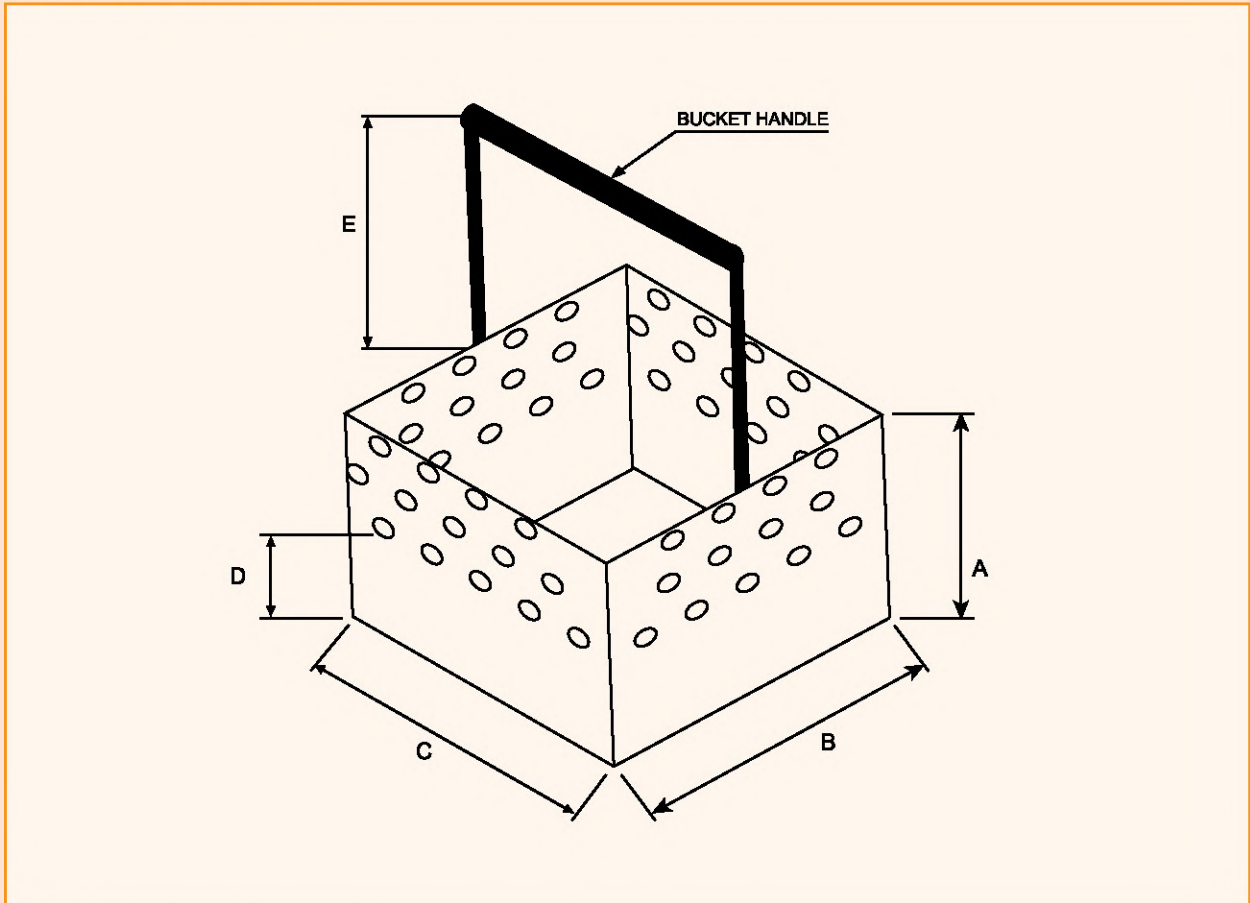


ISOMETRIC VIEW



Note: The dimensions can be altered to suit specific requirements

uPVC SAND TRAP



Dimensions:

A : mm

B : mm

C : mm

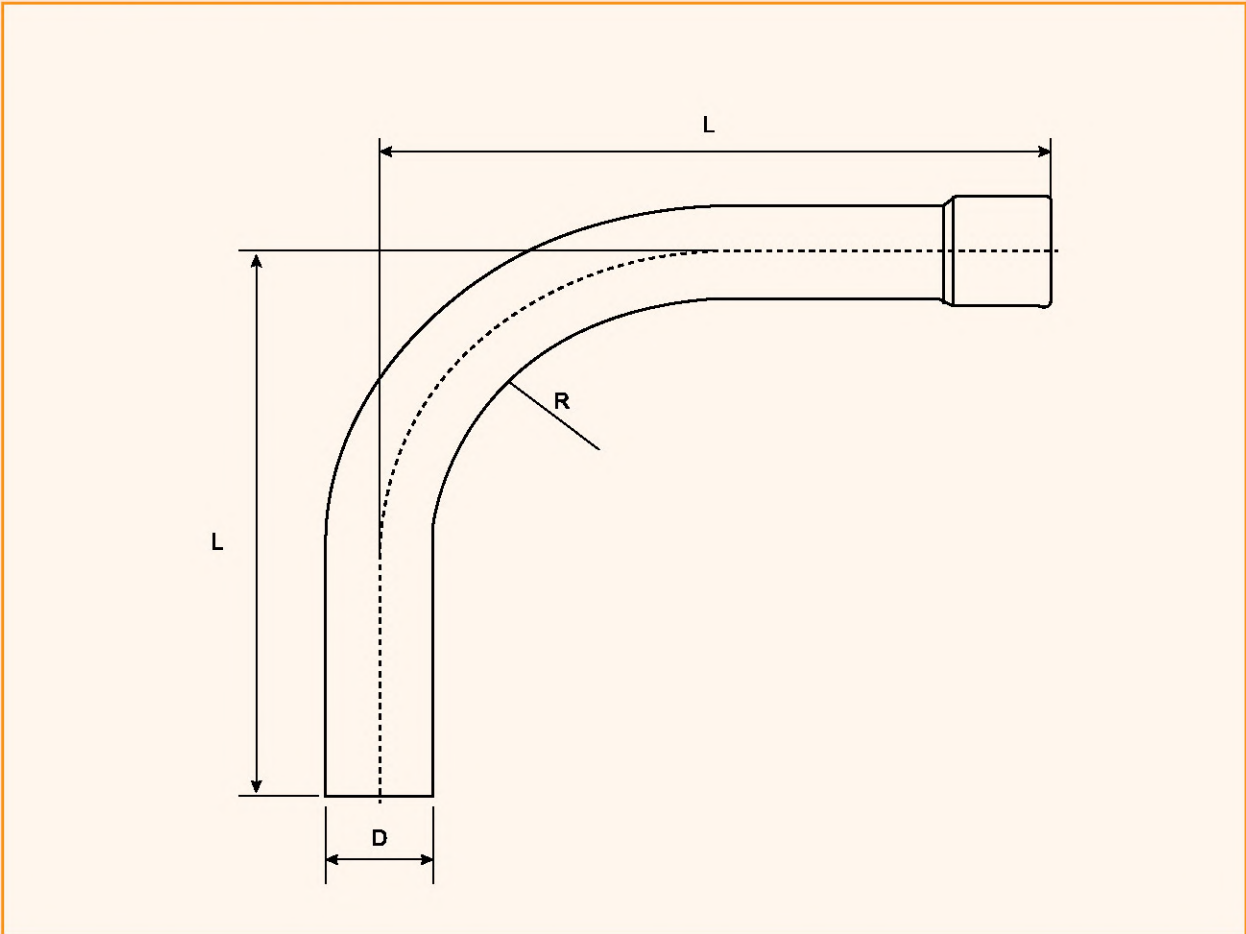
D : mm

E : mm

Perforation Details :

Others :

LONG RADIUS BEND



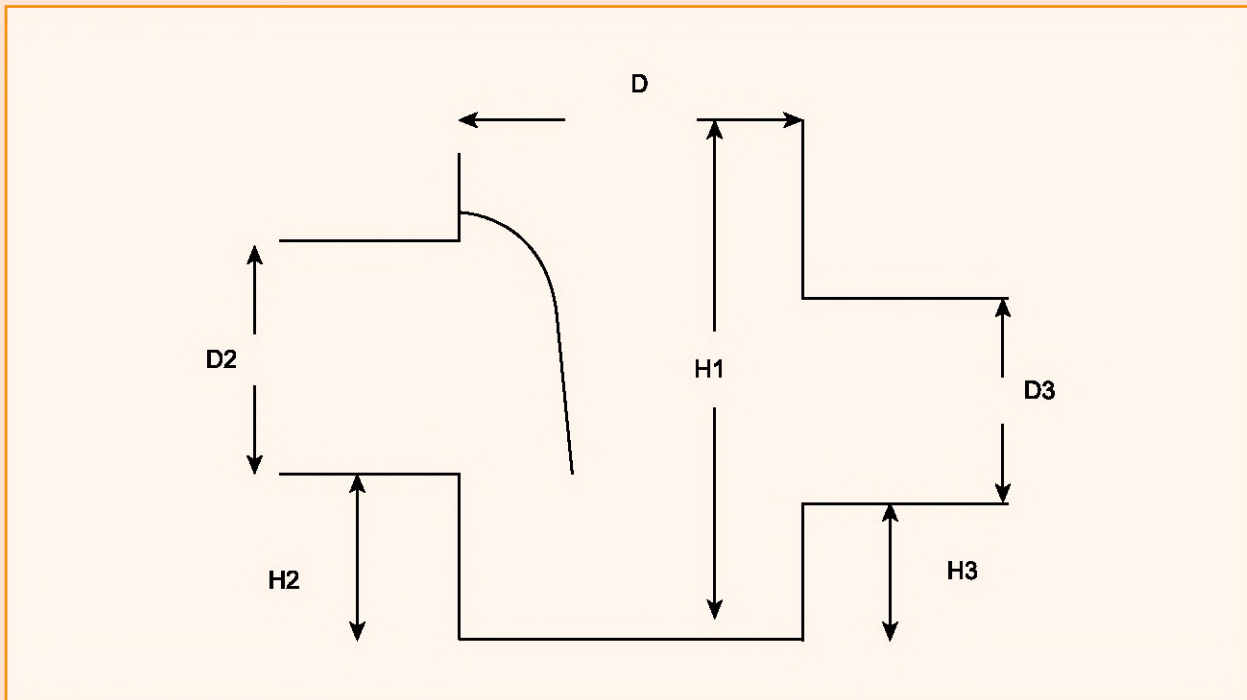
Pipe Size (OD - MM)	Radius - R (MM)	Angle

Socket Type : Solvent Rubber

End Type : Solvent Spigot

Others :

GULLY TRAP



Specifications:

D : mm

D2 : mm

D3 : mm

H1 : mm

H2 : mm

H3 : mm

Requires

Separator :

- D2 Side
- D3 Side

Top Cover:

- Grated Cover
- Close Cover with Bolts and Nuts

Other :

COSMOPLAST uPVC FABRICATED GREASE TRAPS

Purpose of the Grease Trap:

Grease Traps are designed for the interception of greasy waste water prior to discharge into the sewer. Grease traps separate the grease from the waste water, which will protect the pipes in the system from clogging with grease and also help prevent clogging of the soil in the same manner.



When to Use Grease Traps:

Grease traps are required for any installation where the amount of grease in the effluent stream exceeds fifty milligrams per liter (50 mg/l).

In the opinion of the Building Official, grease can be introduced into the drainage system in quantities that can cause line blockage or hinder sewage disposal. All floor drains located in the food preparation or cooking areas must be connected to the grease interceptor. Service sinks used for the disposal of wastewater from mopping of floor surfaces in food preparation and cooking areas must be connected to the grease interceptor.

Where to Use Grease Traps:

Grease traps are rarely used for homes. Their main application is in treating kitchen waste waters from hotel kitchens, cafeterias, restaurants, hospitals, schools, bars, factories, clubs, churches, or other commercial food preparation or cooking areas and other institutions with large volumes of kitchen wastewater.

Where to Install Grease Traps:

The grease trap must be installed in the waste line leading from sinks, drains, food waste grinders, garbage can washers, dumpster drains, or other similar fixtures.

Effluent from the grease trap is deposited in the septic tank along with the other water carried waste from the facility.

When to Clean Grease Traps:

Grease traps should be cleaned regularly to prevent clogging. It is recommended that grease traps be cleaned when seventy-five percent (75%) of their grease retention capacity is reached.

Material of Grease Trap

Cosmoplast Grease Traps are fabricated from uPVC sheets and pipes, which are manufactured according to the international standards for drainage applications (BSEN1329 and BSEN1401).

Sizes of Grease Trap

Grease traps are usually manufactured in 4 types, Type A, Type B, Type C and Type D

Grease Trap Type A



Type A

Grease Trap Type B



Type B

Grease Trap Type C



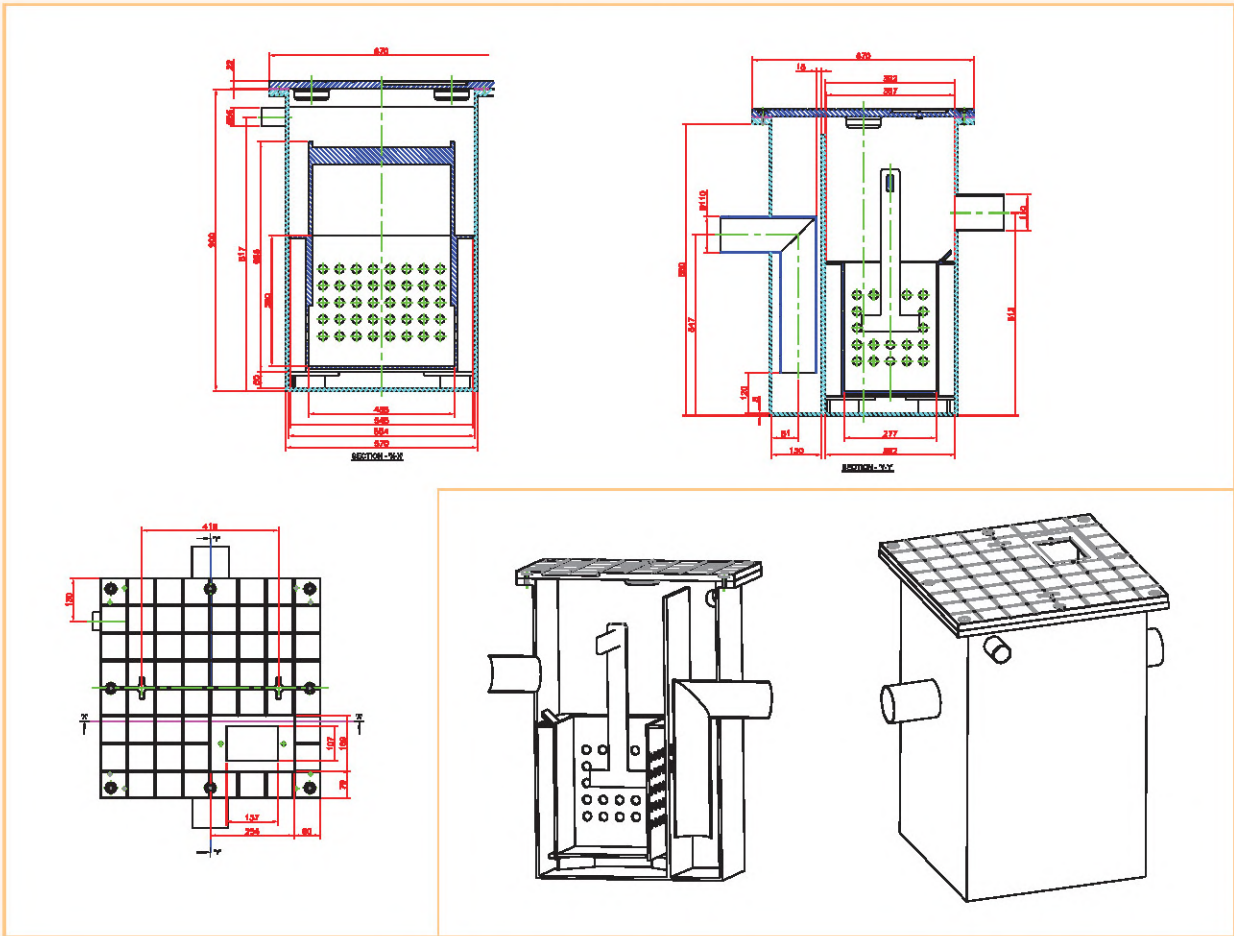
Type C

Grease Trap Type D

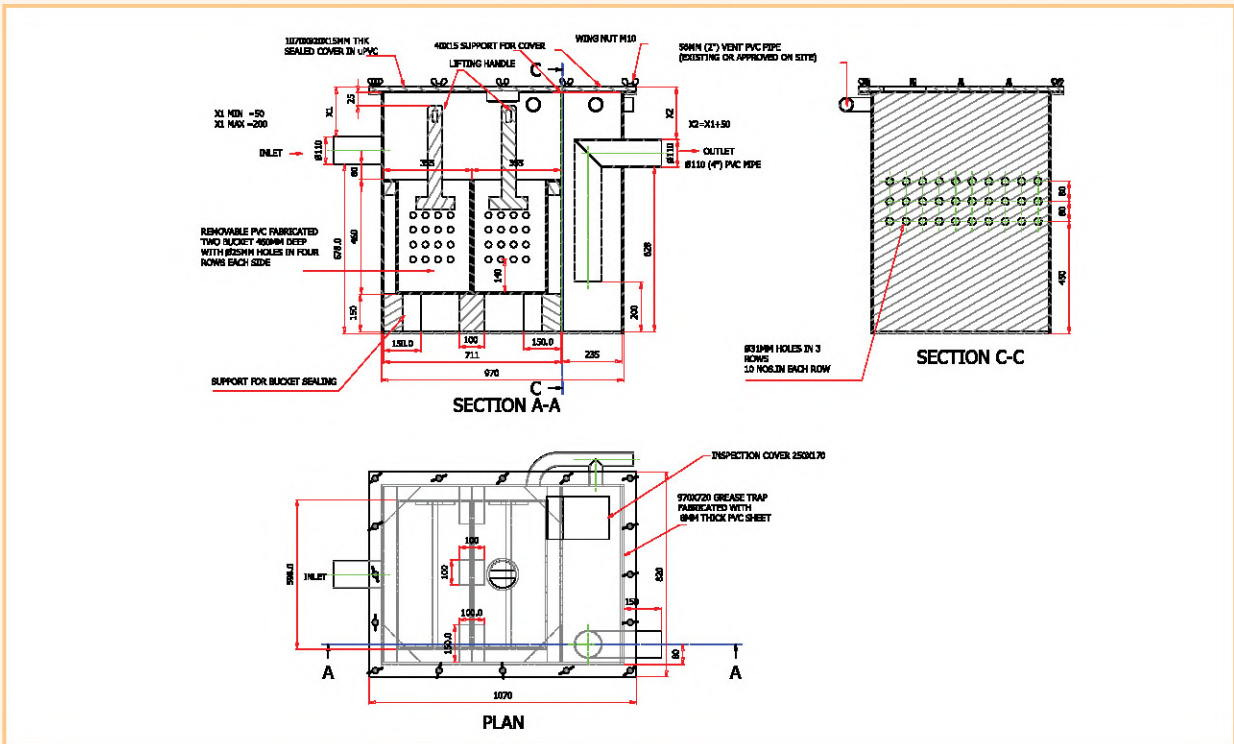


Type D

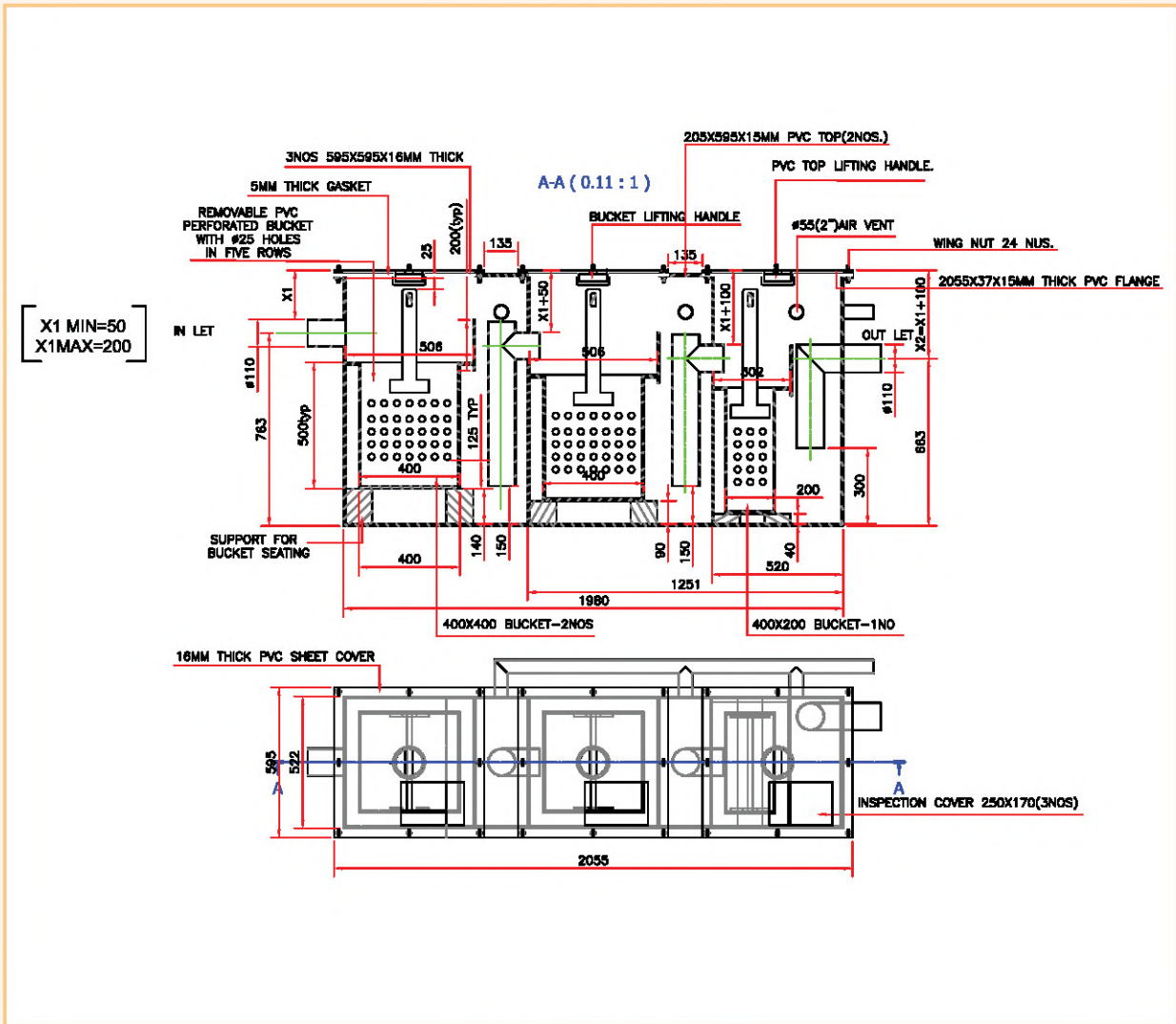
GREASE TRAP - A



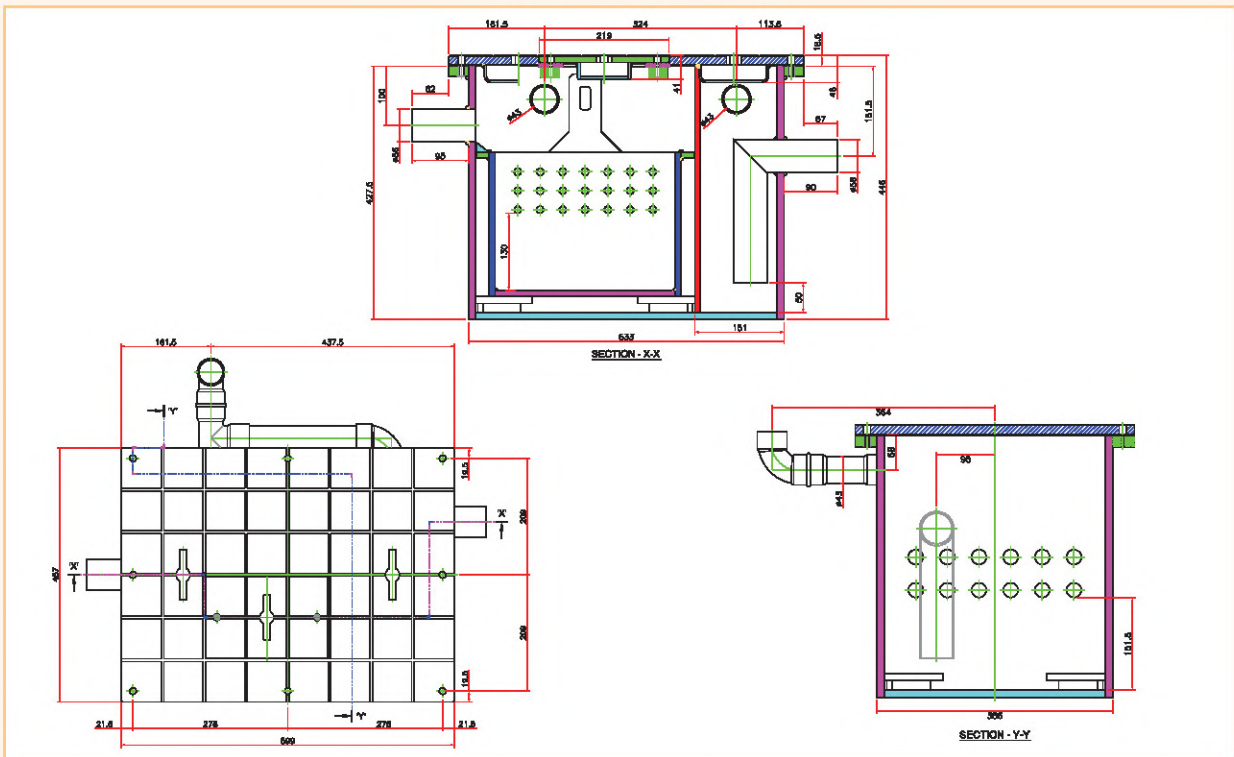
GREASE TRAP - B



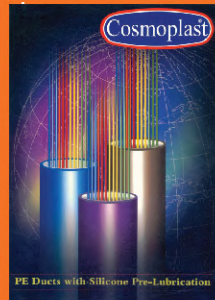
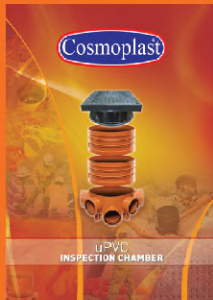
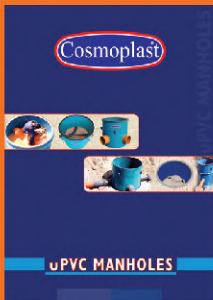
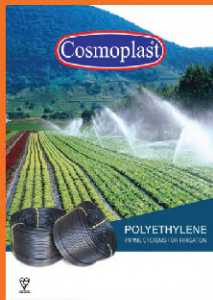
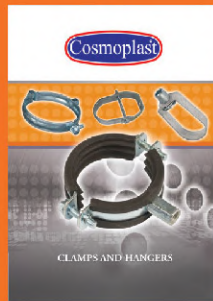
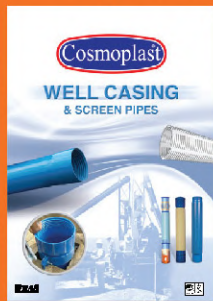
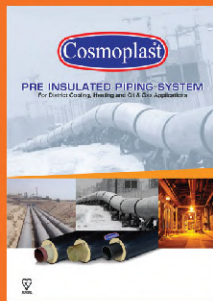
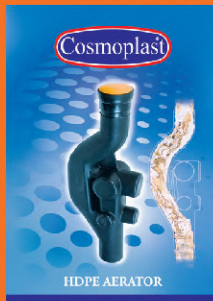
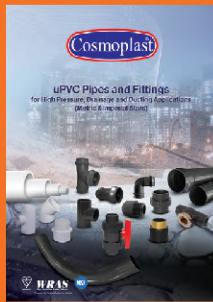
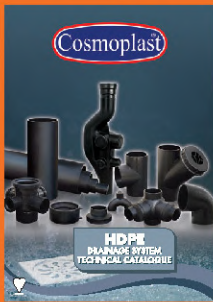
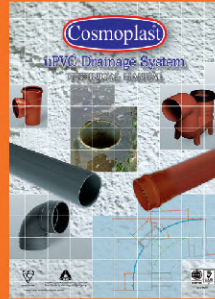
GREASE TRAP - C



GREASE TRAP - D



Pipeline Systems



www.cosmoplast.com

Cosmoplast Industrial Co. LLC

Sharjah

Sales Off. Tel: +971 8 5331212
 Fax: +971 6 5331917 / 5332901
 P.O. Box: 6032

Dubai

Tel: +971 4 8850500
 Fax: +971 4 8850700
 P.O. Box: 50488

Abu Dhabi

Sales Off. Tel: +971 2 5515364
 Fax: +971 2 5515365
 P.O. Box: 8583

Saudi Arabia-Riyadh

Tel: +966 11 265 4501
 Fax: +966 11 471 4669
 Email: pipeline@interplast-ksa.com

Qatar-Doha

Tel.: +974 44687881/2
 Fax: +974 44687886
 Email: info@harwalqa.com

Email: pipeline@cosmoplast.com

